

High Performance Sound System - digitally powered **TSM 12 dp**



The TSM 12 dp is a multi purpose, high-end loudspeaker system featuring integrated digital amplifier electronics with 1000 / 350 Watt AES power and a DSP controller. The 12" long excursion Neodym low-mid driver and the 1.4" Neodym HF driver with 3" coil are each driven by a separate amplifier channel. A range of factory-configured presets and volume settings can be selected. A wide range of possibilities for mounting flying accessories make the TSM 12 dp an interesting option for permanent installations.

PRODUCT SPECIFICATIONS

Speaker Components	12" Nd / 1,4" Nd
Description	Multi Purpose Sound System
Amp Power	LF: 1000 W AES / 110-230 V HF: 350 W AES / 110-230 V
Rated Current	0,85 A @ 230 V
SPL <small>Peak @ 1 m</small>	131 dB
Max. Input Signal	25 dBu
DSP	HDLM FPGA Processing 32 bit floating point
AD / DA	24 bit / 96 kHz
Latency	0,8 ms (analog in to analog out)
Usable Range	50 Hz - 19 kHz (-6 dB)
Tuning Frequency <small>excursion minimum</small>	54 Hz
X - Overpoint <small>acoustical</small>	Depends on preset
Coverage <small>horizontal / vertical</small>	90° x 60° - rotatable
Max. Splay Angle	- - -
Connectors	Neutrik XLR in/out Neutrik PowerCon in/out
Handles	1 x
Rigging / Fittings	2 x M10 / 7 x M8 35 mm pole mount
Weight	21 kg
Size <small>height x width x depth</small>	60,6 x 36,0 x 33,7 cm
Order No.	00958/dp



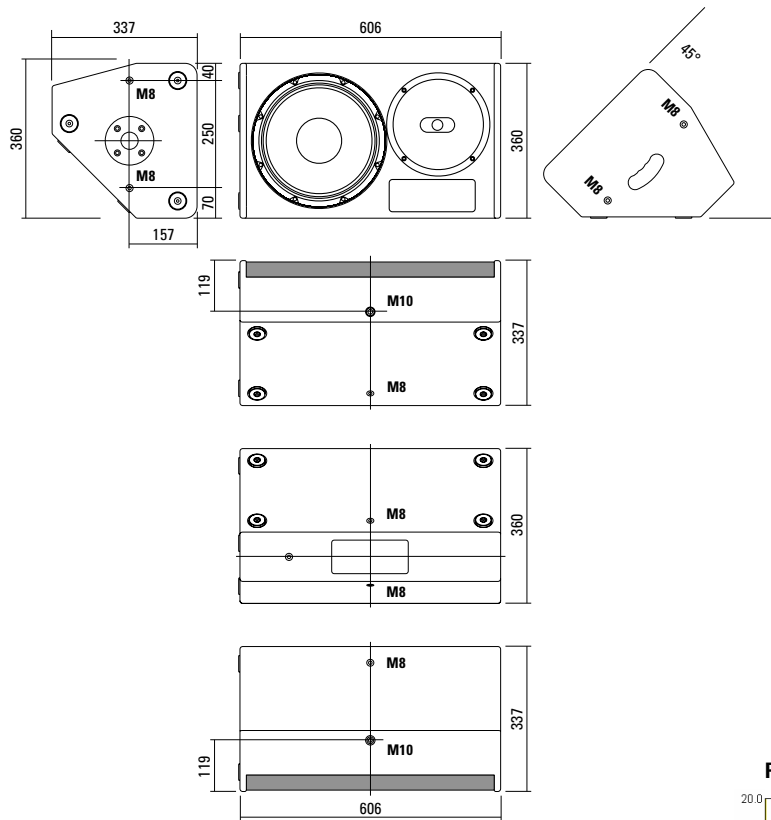
Generously dimensioned bass reflex tunnel provides bass response that is exceptional for this class.



35 mm speaker stand flange.

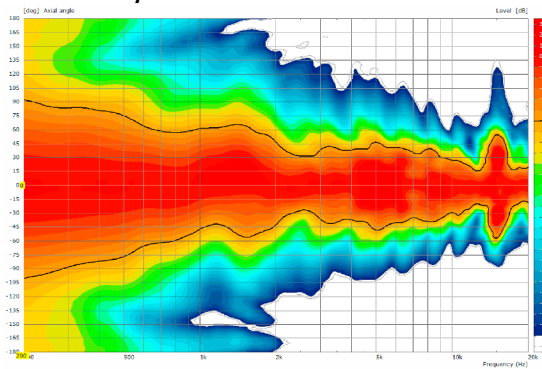


DIMENSIONS

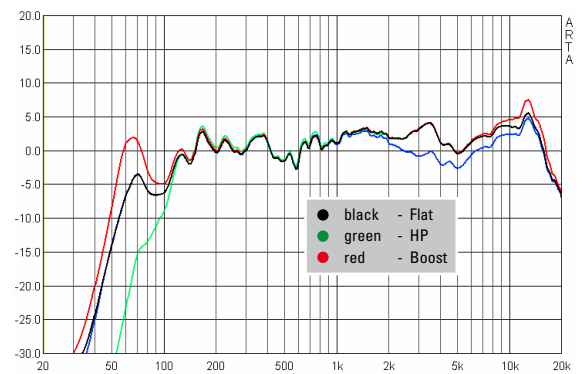


COVERAGE PATTERNS

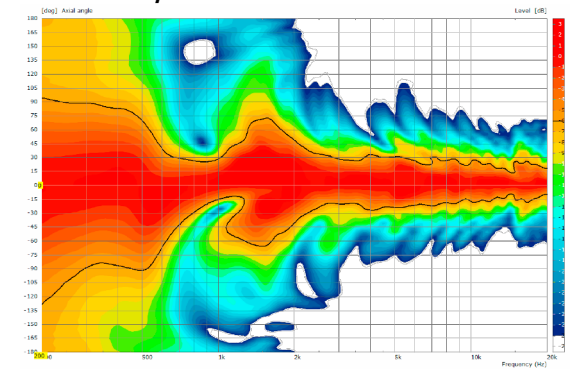
2D Directivity Plot - horizontal



Presets - Frequency Response



2D Directivity Plot - vertical



The TSM 12 dp features integrated digital amplifier electronics with a DSP controller. Various factory-configured presets and volume settings can be selected.

High-grade electronic components from the industrial sector and a first-class circuit design ensure excellent audio quality with low distortion and a minimal noise floor.

Highly efficient and "intelligent" limiter systems ensure optimum protection against overload, without restricting the possibilities offered by this high-performance sound system.

Level

Adjustment in 3 dB steps (-6 dB to +3 dB).

Status

Mute LED

Red light when the system is muted or under technically critical conditions.

Limit LED

Yellow light when the limiter is restricting the level.

Signal LED

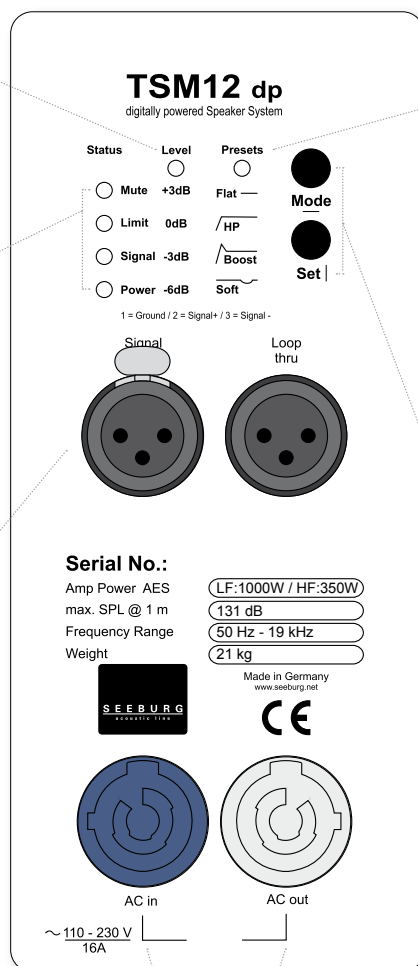
Green light when the input signal exceeds -20 dBu.

Power LED

Green light when the system is switched on.

XLR

Symmetrical analog input, max. Input +25 dBu. Effective filter protection against HF interference and DC Voltages. Virtual ground lift.



Presets

Flat

This setting provides a linear frequency response with a neutral sound characteristics. Standard setting for many applications.

HP

Switches in a high pass filter for use in combination with a subwoofer.

Boost

The same neutral response as the „Flat“ setting, but with the addition of a bass boost.

Soft

Reduces the level in the frequency range from 2.5 - 5 kHz, to which the ear is particularly sensitive. This setting is recommended for high level reproduction of highly compressed music tracks.

Mode - key

Switches between control modes Status, Level and Presets.

Set - key

Setting of various values and Mute on / off.

PowerCon (blue)

Power supply
~ 110-230 V / 16 A max.

PowerCon (grey)

~ 110-230 V / 16 A max.
loop through connector

Flying Bracket



for TSM 12 / A 6
incl. screws
(per unit: 2 pcs. M10 x 30 adjustable
handle screws)
Order No. **01216/set**

Flying Bracket



for TSM 12 / A 6, horizontal alignment,
incl. screws (per unit: 2 pcs. adapters,
M10 hex lock nuts, flat- and rubber
washers)
Order No. **01216/H/set**

Handle Screw



for flying brackets, adjustable
M10 x 30
Order No. **08375/30**

Ergostyle Lobe Knob



for flying brackets, M10 x 20,
with grip, adjustable
Order No. **08171**

Rubber Washer



for flying brackets,
40 mm
Order No. **01205**

Flange



35 mm Ø → M10,
Order No. **08126**

Doughty Quick Trigger Clamp



max. load 250 kg
Order No. **01223/250 kg**

Ring Screw



M10– DIN 580
Order No. **73700**

TV Spigot



10 mm internal thread,
28 mm Ø
Order No. **08128**

Steel Safety



4 mm x 600 mm, black,
max. load 10 kg (BGI 810-3),
quick connector undetachably
Order No. **01376/4**

Chain Fastener



VBS 7 mm
Order No. **01378**

ACCESSORIES TSM 12 dp

Wall Mount



for U-brackets, max. load 40 kg,
incl. screws
(M10 x 70 mm socket head screw,
M10 hex lock nut and flat washer)

for 8"-12" speakers
Order No. **08130/F/269**

Wall Mount



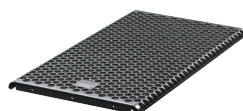
with tilt unit, max. load 40 kg
Order No. **08130**

Speaker Stand



K&M, incl. wind up,
height 138,5 to 218 cm,
max. load 50 kg,
Order No. **03011**

Honeycomb Grille



for TSM 12 front grille version,
for replacement, foam behind
Order No. **97073/hex/compl.**

Hybrid Cable System



PowerCon-PowerCon / XLR-XLR

2,5 m	Order No. 08462
5 m	Order No. 08464
10 m	Order No. 08466
15 m	Order No. 08468

Cover



for TSM 12 / A 6,
padded
Order No. **01244**

Rain Cover



for TSM 12 / A 6
Order No. **01244/outdoor**

Flight Case

for 2 pcs. TSM 12 / A 6
heavy duty, 9 mm birch multiplex, PVC
coated, 6 x recessed sprung handles,
4 x butterfly catches, 4 x 100 mm blue
wheels, 2 pcs. with brake, partition
walls, interior lined with felt.

Order No. **16010 P**

